



SOLUTION BRIEF

Content Filtering Overview

A traffic monitoring, policy enforcement,
and blocking solution





Introduction to Netsweeper Content Filtering

Netsweeper provides industry leading carrier-grade web content filtering solutions, backed by years of research and development, and is designed to excel in complex and highly demanding network environments.

The Netsweeper content filtering platform has been built with the perfect combination of functionality, scalability, and reliability. Available in multiple deployment architectures, it leverages Netsweeper's real-time AI-based Category Name Service (CNS) to deliver feature rich content filtering functionality to the education, telecom, and enterprise markets.

In a world of constantly evolving technologies, our customers depend on Netsweeper technology, and our dedicated team of professionals, to do more than just provide another network product. They partner with Netsweeper to leverage our unparalleled commitment to excellence, continual innovation, and close collaboration.

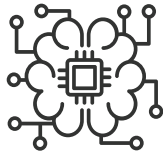
Categorization with CNS

With decades of research and development, Netsweeper’s web content categorization platform (the Category Name Service or “CNS”) is the industry’s most accurate and comprehensive artificial intelligence solution for classifying web content. It aggregates web traffic from all Netsweeper-filtered devices globally, categorizing every single URL request, and makes the resulting categorization available

to all Netsweeper deployments (again, globally). No other solution even comes close.

The Category Name Service uses proven artificial intelligence technology to analyze web content and assign categories to URLs. It’s built a dynamic database of billions of URLs, updated daily with millions more. Hundreds of content categories in multiple languages are available.

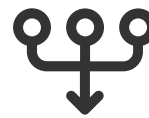
Category Name Service (CNS):



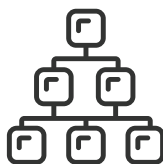
**REAL-TIME AI
CATEGORIZATION,
24/7/365**



CLOUD TECHNOLOGY



**COMBINES TRAFFIC FROM
AROUND THE WORLD**



**HUNDREDS OF
CATEGORIES, MULTIPLE
LANGUAGES**



**SCANS FOR VIRUSES AND
MALWARE**



**INTEGRATES INTO OEM
SOFTWARE SOLUTIONS**

Policy Management

The Netsweeper management interface (WebAdmin) provides centralized filtering policy management and administration through a web-based application. Filtering policy changes are seamlessly applied to all policy servers within the cluster.

Define and manage filtering policies based on user, endpoint, group, time, day, and more. User-based rights allow you to personalize access based on IP address, user, or group. Time and day-based rights enable you to

grant web access on specific days or hours, increasing productivity and reducing bandwidth to ensure user activity won't be negatively impacted by time-consuming distractions.

Delegated administration enables system operators to push filtering policy management to individuals and locations outside the core operations centre, reducing system management overhead and allowing filtering to be tailored to their specific needs.

Netsweeper Policy Management:



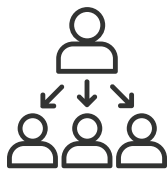
**HIGHLY GRANULAR
FILTERING POLICIES**



**SEARCH KEYWORD
FILTERING**



**SAFE-SEARCH
ENFORCEMENT**



**DELEGATED ADMINISTRATION TO
ALLEVIATE MANAGEMENT OVERHEAD**



**LIST-BASED, DYNAMIC CATEGORY
BASED, AND TIME/DAY-BASED
FILTERING POLICIES**

Logging and Reporting

Managing a filtering platform means making decisions about filtering policies and acting when incidents occur. This requires meaningful information about user habits on the network, delivered via a powerful reporting framework that enables highly granular analytics. Netsweeper's logging and reporting framework provides exactly that: a powerful logging framework that can scale to the largest networks, and a reporting engine that can transform that raw information into

meaningful insights.

In addition to the out-of-the-box reports that are available from initial deployment, you can configure almost any type of report you require to perform the network analytics you need. Reports can be on-demand or scheduled to occur at a set interval. View the reports directly in the Netsweeper WebAdmin interface or have them delivered to various users in a variety of formats.

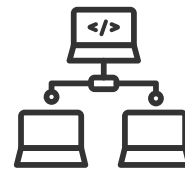
Logging and Reporting Features:



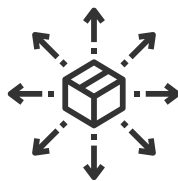
**HIGHLY SCALABLE
LOGGING FRAMEWORK**



**POWERFUL REPORTING
ENGINE TO PRODUCE
INSIGHTS**



**DEPLOY IN HIGHLY
AVAILABLE
ARCHITECTURES**



**DISTRIBUTE LOGGING AND
REPORTING FUNCTIONS**



**REPORT ON USER, GROUP, URL,
DOMAIN, CATEGORY, MORE...**

SSL Decryption

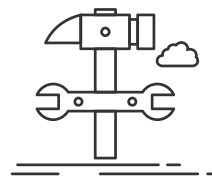
Encryption of web traffic with Secure Sockets Layer (SSL) is commonplace. Web filtering platforms with (or without) SSL decryption are limited to filtering traffic based on the website's domain, preventing granular control of access to online content and web applications. Businesses and educators are faced with the challenge of finding a cost-effective solution that provides comprehensive filtering and easy to implement SSL decryption. Netsweeper has the answer with its NSProxy.

NSProxy is a powerful traffic inspection engine that enables selective SSL decryption at a competitive cost. NSProxy can be applied to all web traffic, whether it's encrypted or not. Filtering policies seamlessly integrate granular access controls, including web applications. User traffic is logged in detail, enabling detailed reporting and empowering system operators to make access control and acceptable user policy decisions.

NSProxy Selective SSL Decryption:



**SELECTIVELY DECRYPT SSL
(HTTPS) TRAFFIC**



**BUILD A PROPRIETARY WEB
FILTERING CLOUD OR USE
NETSWEEPER CLOUD SERVICES**



**MANAGE FEATURE-RICH WEB
APPLICATIONS (FACEBOOK,
TWITTER, ETC...)**



**DELIVERS 10GBPS OF THROUGHPUT, UP
TO 6GBPS OF SSL DECRYPTION**

Endpoint Filtering With Netsweeper Client Filter

Methods of computing and communication are becoming more mobile every day. The use of laptops, tablets, netbooks, and smartphones in both the corporate and education community has raised concerns around security and acceptable Internet use.

Netsweeper provides client-based filtering in addition to its network-based solution (Windows, OSX, iOS, Android, Chrome),

extending comprehensive web content filtering to users outside of the core network. Off network (remote/roaming) usage is managed, logged, and reported the same as on-network usage with Netsweeper's client filter technology. Traffic is not proxied to a central server to perform filtering, ensuring private data is not at risk.

Netsweeper Mobile Filtering:



CONTINUE TO PROTECT USERS AND EQUIPMENT OFF-NETWORK



MONITOR OR AUDIT USAGE THROUGH EXTENSIVE REPORTING WHILE DEVICES ARE OFF-NETWORK



FILTER AND/OR MONITOR INSTANT MESSAGING, SOCIAL MEDIA, PEER TO PEER FILE TRANSFERS AND ALL INTERNET REQUESTS TO ENSURE DEVICES ARE NOT BEING ABUSED



WINDOWS, OSX, GOOGLE CHROME & CHROMEBOOKS, IOS, ANDROID

Cloud Deployment Models

Netsweeper's flexible, scalable, and compatible cloud-based Internet filtering solutions have all the features that your organization will need to save money, improve online security, and increase productivity. Netsweeper's cloud-

based filtering solutions have been strategically designed for the most simplified installation and management and is currently providing services to North America, EU, and the UK.

How did you want your Cloud?



**DEPLOY YOUR OWN PROPRIETARY
FILTERING CLOUD**



USES NETSWEEPER CLOUD SERVICES



**EASILY FILTER DISPARATE LOCATIONS
WITH A CENTRALIZED PLATFORM**



**LOWER TCO WITH A SINGLE POINT-
OF-PRESENCE**

Authentication and Identification

Identifying users on your network is a key requirement for implementing a web content filtering solution that provides granular policy management and insightful network usage information. Being able to leverage existing identification/authentication infrastructure with a web filtering solution reduces complexity, saving time and money.

The Netsweeper platform supports integration with popular directory service systems to provide per-user filtering as well as administrative authentication for management of your filtering platform.

Netsweeper Authentication and Identification:



MICROSOFT ACTIVE DIRECTORY/AZURE, NOVELL EDIRECTORY, APPLE OPEN DIRECTORY, GOOGLE DIRECTORY



SUPPORTED IN-NETWORK AND OFF-NETWORK WITH CLIENT FILTER SOFTWARE



AUTHENTICATE FOR PER-USER FILTERING, AND ADMINISTRATIVE FUNCTIONS

Other Features and Functions

- DNS based filtering
- In-Line anti-virus and malware scanning
- API for custom integrations
- Multi-language filtering
- Multi-language administration
- Web application and social media controls
- Captive portal with authentication
- Carrier-grade solution
- Filter non-HTTP protocols
- In-line content detection and alerting

Technology Specifications

- Intel x86 processor 2Ghz or better
- 4GB RAM or better
- 1 (or more) network interfaces
- 100GB HDD or better

